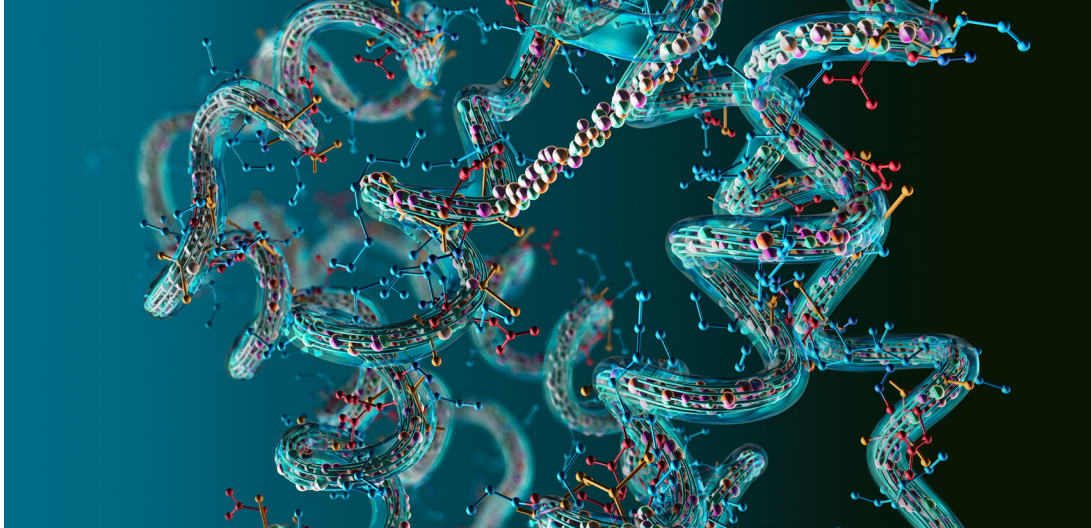


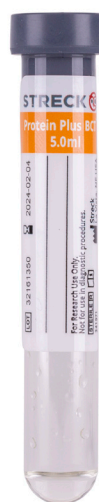
eurobio bmd



**STRECK**



## Protein Plus BCT™



For Research Use Only. Not for use in diagnostic procedures.  
Protein Plus BCT should only be used for research or the development of new assays.

**Protein Plus BCT™** is a direct draw whole blood collection tube intended for the stabilization of draw-time concentrations of plasma proteins for up to 5 days\* at ambient temperature.

\*Depending on protein.

For Research Use Only. Not for use in diagnostic procedures.

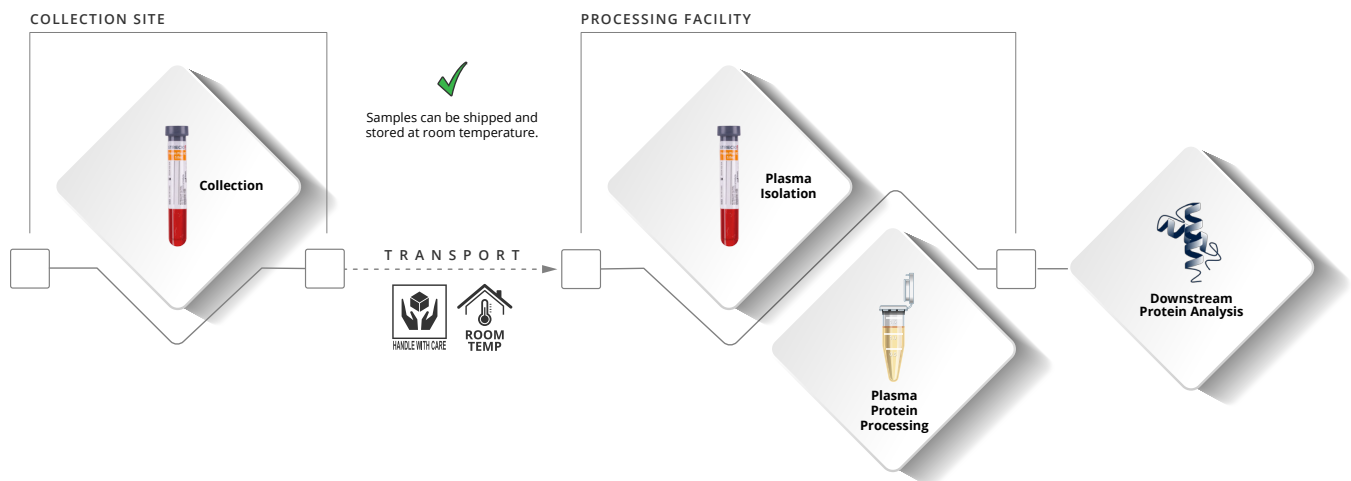
Protein Plus BCT should only be used for research or the development of new assays.

## Features

- + Stabilizes plasma protein markers.
- + Limits *ex vivo* platelet activation and hemolysis.
- + Compatible with mass spectrometry and immunoassay-based proteomic analysis.

## Benefits

- + Minimizes contamination of blood cell-secreted proteins into plasma, providing sample integrity during storage, shipping and handling of blood samples.
- + Reduces the need for immediate sample processing and analysis.
- + Room temperature storage reduces costs and complications associated with cold chain shipping.
- + Allows for the batching of samples, optimizing laboratory workflow.



## Protein Plus BCT™ Limits *ex vivo* Hemolysis and Platelet Activation

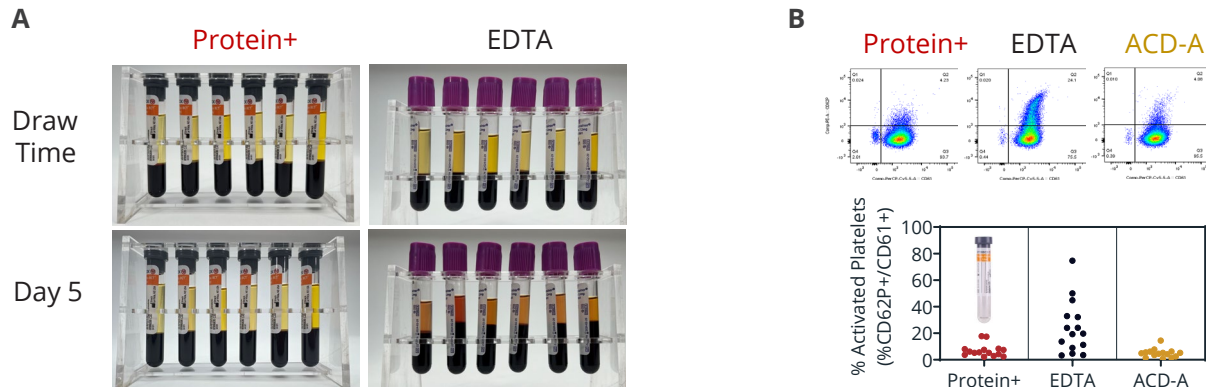


Figure 1. Protein Plus BCT has minimal *ex vivo* hemolysis during whole blood storage at ambient temperature for up to 5 days compared to EDTA (A) and limited platelet activation (%CD62P+/CD61+) at draw time compared to EDTA and ACD-A (B).

## Protein Plus BCT Maintains Draw-time Concentrations of Plasma Proteins During Ambient Whole Blood Storage

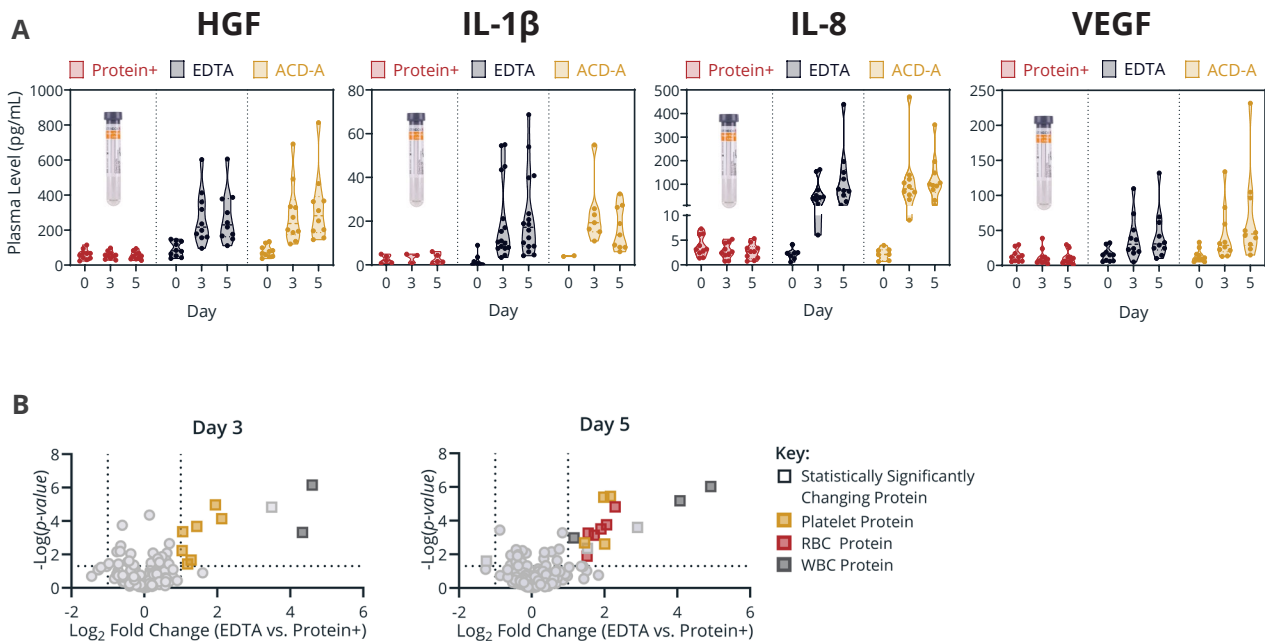


Figure 2. In contrast to what is observed with EDTA and ACD-A tubes, samples collected into Protein Plus BCT maintain draw-time *in vivo* plasma levels of proteins and display limited changes in abundance of proteins related to blood cell degradation and *ex vivo* platelet activation after 3 or 5 days of whole blood storage at ambient temperature, as shown by Luminex xMAP® (A) and differential LC-MS/MS (B) analysis. Square markers represent proteins with statistically significant changes in abundance between EDTA and Protein Plus BCT ( $\text{Log}_2$  fold-change >1 and  $-\text{Log}_{10}(p\text{-value}) > 1.3$ ). Proteins with a positive  $\text{Log}_2$  fold change are more abundant in EDTA than the Protein Plus BCT. Colored markers denote proteins known to come from platelets (gold), RBCs (red) or WBCs (dark grey).

Protein Plus BCT™	Configuration	Catalog Number
Protein Plus BCT™	6 tube pack Protein Plus BCT (5 mL), RUO	230627
	100-tube box Protein Plus BCT (5 mL), RUO	230628
	1000-tube case Protein Plus BCT (5 mL), RUO	230629

*For Research Use Only. Not for use in diagnostic procedures.  
Protein Plus BCT should only be used for research or the development of new assays.*

**Domestic Sales**

800.843.0912  
domesticsales@streck.com

**International Sales**

+1 402.333.1982  
international@streck.com

**Customer Service**

800.228.6090  
custserv@streck.com

**Technical Services**

402.691.7510  
800.843.0912  
Fax: 402.691.7518  
technicalservices@streck.com

